



NOTICE: New Product Names

The contents of this asset do not reflect our recent product name changes. Here are the new Riverbed® names:

Old Names	New Names
Steelhead	SteelHead™
SteelHead® CX appliance	SteelHead™ CX
Steelhead® DX appliance	SteelHead™ DX
Steelhead® EX appliance	SteelHead™ EX
Steelhead® Cloud Accelerator	SteelHead™ SaaS (for Office 365, etc)
Cloud Steelhead	SteelHead™ CX for cloud deployments
Virtual SteelHead	Steelhead™ CX for virtual deployments
Steelhead® Mobile software	SteelHead™ Mobile
Steelhead® Mobile Controller	SteelCentral™ Controller for SteelHead Mobile
Steelhead® Interceptor® appliance	SteelHead™ Interceptor
Steelhead® Central Management Console	SteelCentral™ Controller for SteelHead
Cascade® Profiler	SteelCentral™ NetProfiler
Granite®	SteelFusion™
Cascade® Pilot software	SteelCentral™ Packet Analyzer
Cascade® Shark appliance	SteelCentral™ NetShark

STEELHEAD DX EDITION

TRANSFER AND PROTECT MORE DATA MORE OFTEN WITH LESS RISK AND COST WITH DATA CENTER-TO-DATA CENTER WAN OPTIMIZATION

BUSINESS CHALLENGE

Today WAN performance plays a central role in strategic business initiatives such as data center consolidation, centralization of branch servers and storage, and transitioning from tape-based backup to WAN-based data replication. With the rapid growth in data plus these initiatives that are consolidating more data in fewer data centers, organizations struggle to maintain the service-level agreements, such as Recovery Point and Time Objectives (RPO/RTO), associated with mission-critical business continuity and disaster recovery processes.

To transfer and protect more data more often, organizations must ensure fast and predictable WAN performance despite common WAN performance impairments – high latency, packet loss, limited bandwidth, and competition among applications, while protecting the bottom line by eliminating the unnecessary costs and delays associated with WAN infrastructure upgrades.

THE RIVERBED SOLUTION

SteelHead™ DX WAN optimization appliances are purpose-built to address the unique needs of data center-to-data center workloads, delivering up to 60x improvements in throughput across WANs with high latency and/or packet loss and reducing bandwidth requirements by up to 99%. The solution enables organizations to transfer and replicate more data more often with greater visibility and less cost and risk, ensuring rapid data recovery times and improved business continuity.

SteelHead DX appliance offers the best price/performance value for optimizing data center-to-data center replication workloads, delivering increased optimized WAN capacity at lower cost. The Riverbed® Optimization System (RIOS®) is enhanced and tailor-made for SteelHead DX to provide increased data streamlining and transport streamlining performance for high-speed data transfer and replication workloads and with support for a select set of application streamlining optimizations for common DR applications.

SteelHead DX delivers advanced performance, visibility, and control of common disaster recovery (DR) applications, such as NetApp® SnapMirror® and EMC® Symmetrix® Remote Data Facility (SRDF®)/A. RIOS volume-granular Network QoS ensures that the most important data replication processes complete on time every time. Fine-grain visibility and control of individual storage replication workloads leads to improved performance, predictability, and business planning.

KEY BENEFITS

Improve data transfer & replication for business consolidation & continuity

- Meet or exceed required SLAs, such as RPO/RTO for business continuity and disaster recovery, with increased predictability and reduced cost
- Experience up to 60x faster performance of data transfer and replication workloads

Reduce business risk

- Consistently meet performance SLAs for data transfer and replication workloads despite WAN latency, packet loss, limited bandwidth, and congestion
- Improve your visibility and control of mission-critical data transfer and replication processes

Protect and grow the business

- Reduce bandwidth requirements by up to 99%
- Eliminate projects delays and defer cost of WAN infrastructure upgrades to support strategic business continuity initiatives

KEY FEATURES

Market-leading optimization solution

- Includes the industry-leading Riverbed Optimization System (RiOS)
- RiOS-customized for SteelHead DX to deliver enhanced performance for data center-to-data center workloads
- Award-winning 24x7x365 customer support

Purpose built for data center-to-data center deployments

- Best price/performance value for optimizing data center-to-data center replication workloads, delivering increased optimized WAN capacity at lower cost
- New Turbo Data Streamlining option designed for higher data replication performance between data centers. Available only for the DX appliance.
- Select set of application streamlining capabilities included for common DR applications, such as NetApp SnapMirror and EMC SRDF/A.

Enhanced Visibility and Control

- Enhanced Network QoS for volume-granular traffic shaping of replication processes
- Detailed throughput and bandwidth optimization reports for data replication workloads
- Storage-granular optimization policies for improved WAN performance and bandwidth savings

Streamlined Management

- Streamlined network integration and ease-of-management with DX-to-DX auto-discovery
- Enhanced plug-n-play integration with EMC SRDF/A

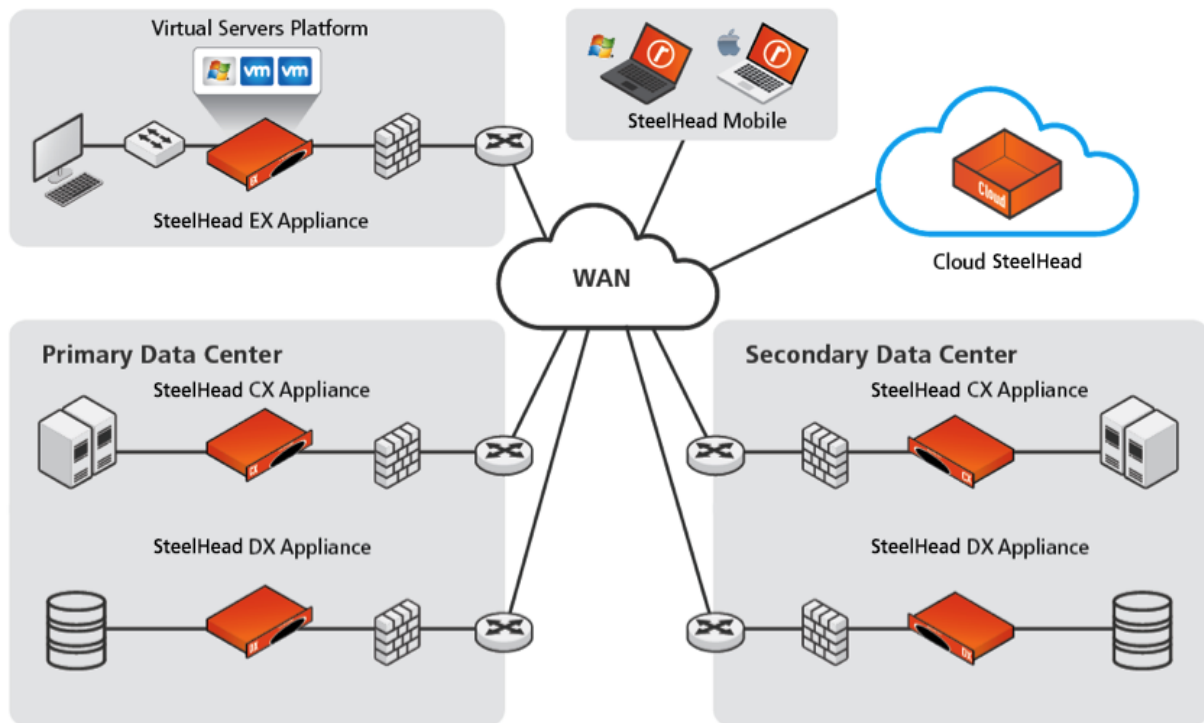


FIGURE 1: RIVERBED DX EDITION – PURPOSE-BUILT FOR DATA CENTER-TO-DATA CENTER DATA TRANSFER AND REPLICATION

LEARN MORE

Riverbed SteelHead appliances support location-independent computing for organizations of all sizes. A broad Riverbed product portfolio delivers a SteelHead appliance or software for every laptop, branch office, or data center providing the highest performance for data and application acceleration, backup, replication, and recovery across WANs. What's more, you can upgrade your appliances within a model family as your WAN demand grows.

To learn more about Riverbed SteelHead appliances, including the Riverbed SteelHead DX appliance, please visit: www.riverbed.com/t/DX